



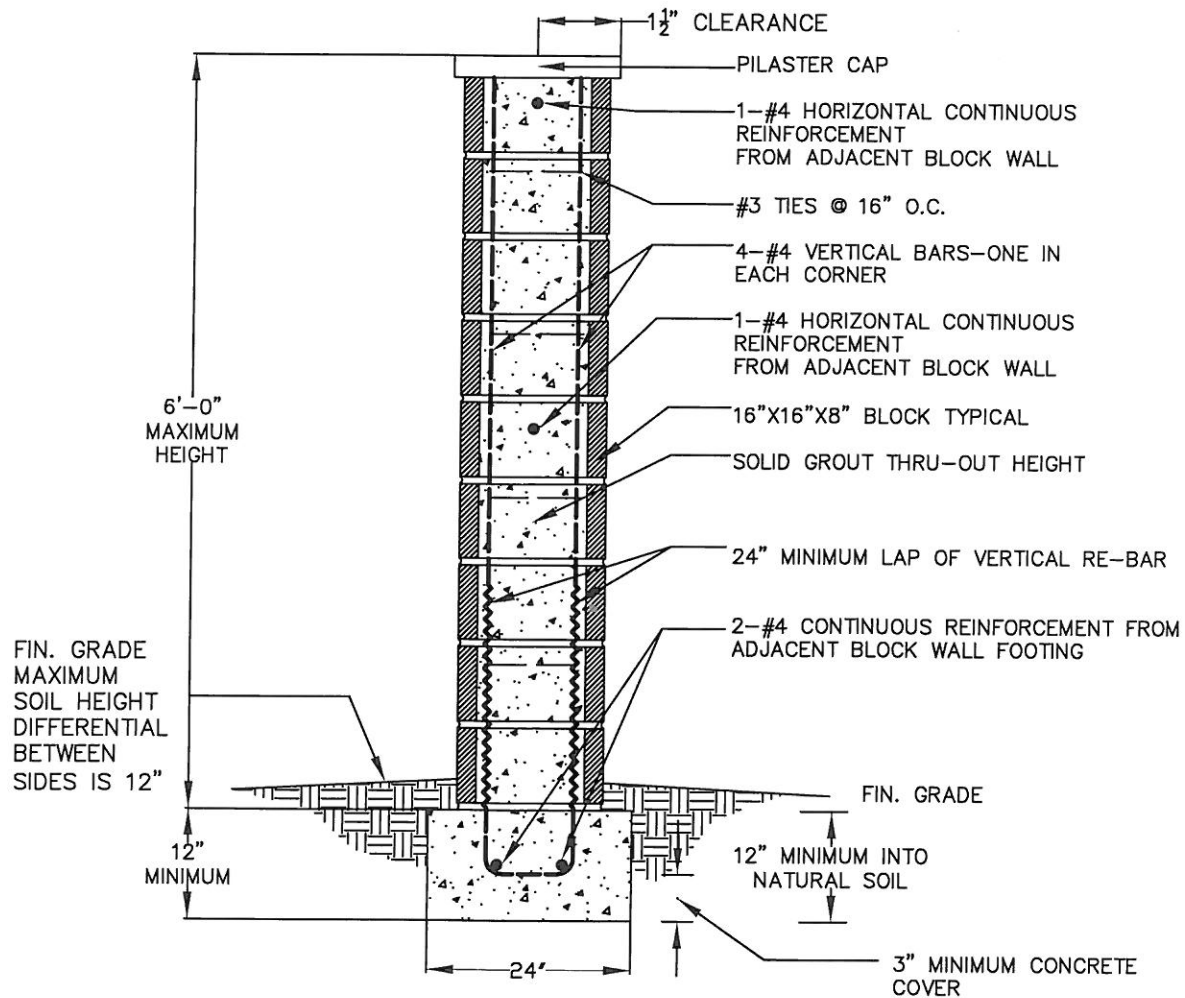
CITY OF FULLERTON

COMMUNITY DEVELOPMENT DEPARTMENT

303 W. COMMONWEALTH AVENUE

FULLERTON CA 92832

(714) 738-6541



PILASTER SECTION

INSTALLED IN CONJUNCTION WITH STANDARD BLOCK WALL.
NOT APPROVED FOR STAND-ALONE PILASTER.