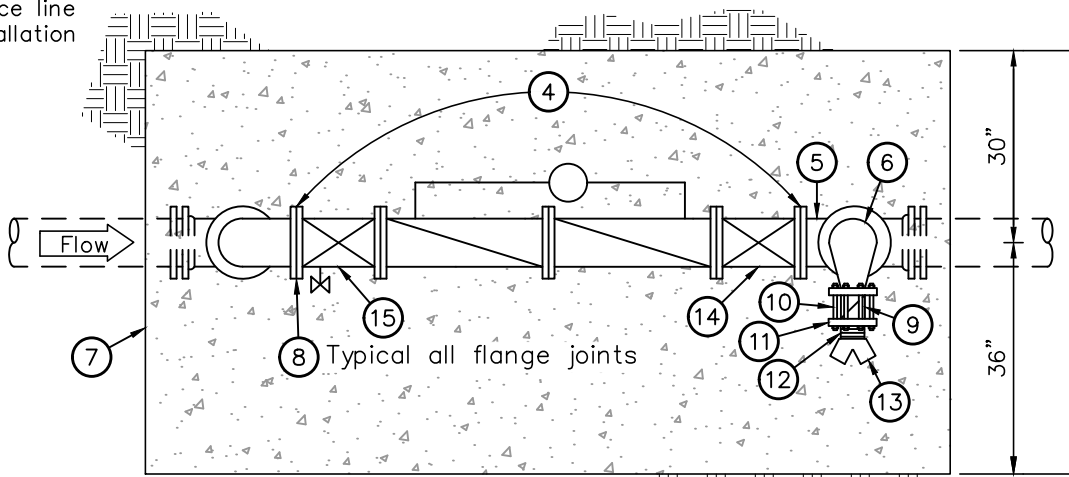


ELEVATION VIEW



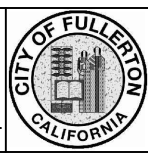
PLAN VIEW

FIRELINE DOUBLE CHECK DETECTOR ASSEMBLY

STANDARD DETAIL	REVISIONS			
	NO.	DATE	NO.	DATE
721	1	12/01/00	4	04/30/18
	2	05/05/13	5	04/20/22
	3	02/29/16		

 5/9/2022
 CITY ENGINEER DATE

 5/24/2022
 PUBLIC WORKS DIRECTOR DATE



LIST OF MATERIALS

- ① 90° DI elbow, FLG x MJ
- ② DIP spool, class 53, FLG (order to size)
- ③ 90° compact DI elbow, FLG
- ④ Double detector check assembly
- ⑤ Compact DI Tee, FLG
- ⑥ Pipe size x 4" – 90° DI reducing elbow, FLG (see Note 3 hereon)
- ⑦ Concrete pad, 4" Slab, Class 520–C–2500
- ⑧ 1/8" full face cloth inserted rubber flange gasket

The following items must have final approval and inspection by the Fullerton Fire Marshal

- ⑨ 4" UL/FM wafer rubber–seated check valve
- ⑩ 8 5/8" x 7" L threaded–studs with 16 nuts, plain
- ⑪ 4" x 9" DI threaded companion flange
- ⑫ 4" x 4"L galvanized nipple, IPT
- ⑬ 4" x (2) 2 1/2" Y bronze–straight pattern fire dept connection (FDC) with plastic caps
- ⑭ Tamper switch, per California Fire Code and National Fire Protection Association Standards
- ⑮ Owner’s chain and breakaway padlock(s)

NOTES

1. Refer to the City of Fullerton’s Approved Materials List for approved manufacturers and model numbers.
2. See Section 3 of these Specifications for testing requirements, locations of assemblies and other requirements.
3. See Section 5–10 of these Specifications for fire line assembly painting requirements.
4. All bolts and nuts except item 10 on sheet 1 are to be zinc plated (brass is not acceptable).
5. Contractor shall submit to Engineer for approval the proposed location of fire line assembly prior to construction. Assembly shall be visible from street and within 50 feet of an area accessible by fire department vehicles.
6. Fire line assembly installed in easements road and streets without curbs or with rolled curbs shall be protected by guard posts per Standard Drawing 615. The number and specific location of such posts will be determined by the Engineer if not shown on the plans.
7. See Section 5–03.04 of these Specifications for polyethylene protective wrapping requirements.
8. New or updated address signage may be required by fire department.
9. New backflow must be tested by a certified backflow device tester as possessing a valid certification issued by the Orange County Environmental Health Agency and an active Fullerton business license.

FIRELINE DOUBLE CHECK DETECTOR ASSEMBLY



REVISIONS			
NO.	DATE	NO.	DATE
1	12/01/00	4	04/30/18
2	05/05/13	5	04/20/22
3	02/29/16		

 CITY ENGINEER	5/9/2022 DATE	 PUBLIC WORKS DIRECTOR	5/24/2022 DATE
--	------------------	---	-------------------

STANDARD DETAIL
721
SHEET 2 OF 2

DEPARTMENT OF PUBLIC WORKS