



# CITY MANAGER'S WEEKLY REPORT

- FULLERTON, CALIFORNIA -

## City Manager's Message

August 6, 2020

### Property Tax: Where Does it Go?

In the January 3rd, City Manager's Weekly [Report](#), the issue of property taxes and where your property taxes go was discussed. A graphic showed that of all the 1 percent "Basic Levy" property taxes paid by a property owner in Fullerton, the City only receives 15.64% while the majority, almost 71%, goes to fund public education. Recently, in searching for additional property tax information, I ran across a blog from the Legislative Analyst's Office ([LAO](#)), which offers non-partisan analysis of the State budget and other legislation. The blog had a [series](#) titled, "California Property Tax: Where Does Your Money Go?" and it was highly informative about the basis of our current property tax system and how events in the 1970's, culminating in the passage of Proposition 13, shaped how property tax is distributed throughout California today. I encourage anyone to read it and also look at the other information on the site. Below, are some highlights from the series, taken directly from the blog:

#### INSIDE THIS REPORT

CITY COUNCIL	4
ANNOUNCEMENTS	6
PUBLIC WORKS	7
PARKS & RECREATION	10
LIBRARY	13
CITY DIRECTORY	18

**State Releases Youth Sports Guidance. See Page 12 for more information!**

#### Understanding Your Property Tax Bill

For many Californians, the property tax bill is one of the largest tax payments they make each year. For thousands of California local governments—K-12 schools, community colleges, cities, counties, and special districts—revenue collected from this bill represents the foundation of their budgets. This blog post and associated videos ([here](#) and [here](#)) explain the different charges on the property tax bill.

#### Where Does the Money Go?

Once you pay your property tax bill to your county tax collector, your county auditor distributes the revenues. Payments for voter-approved debt and direct levies are distributed to the local governments charging these rates. Payments for the 1 percent tax are distributed, according to formulas in state law, to local governments in your county and to a countywide multipurpose fund called the "Educational Revenue Augmentation Fund" or ERAF.

#### Counties, Cities, Schools, and Special Districts Make Up California's Local Governments.

The California Constitution divides the state into counties and establishes them as subdivisions of the state. In addition to counties, state law allows local communities to form cities, schools, and special districts. For instance, local residents can establish a new city by a vote of the residents in the area. Because communities determine the jurisdictions of these local governments, the boundaries of California counties, cities, schools, and special districts overlap in varying ways across the state.

- **Cities' Services Vary.** Roughly a quarter of California's 480 cities are "full-service" cities. Full-service cities provide almost all municipal services to their residents, including police, fire, libraries, and parks and recreation. California's other cities, in contrast, provide a narrower range of services.



# CITY MANAGER'S MESSAGE (CONTINUED)

(LAO Blog post excerpts, continued)

**Schools Receive the Greatest Proportion of Property Taxes Due to Formulas From the Mid-1970s.** As seen in the figure below [not included], schools receive almost 40 percent of statewide revenue from the 1 percent tax. While this varies across the state, in many counties, schools receive between 40 and 50 percent of the property tax revenue collected in the county. The property taxes local governments received in the mid-1970s determines the proportion of property taxes they receive today.

**Property Tax Revenue for Counties, Cities, and Special Districts Varies Widely.** Almost all property taxes collected in a county stay within that county. Within each county, total property tax revenue available for the county, cities, and special districts ranges from over \$5,000 per resident in Alpine County to less than \$270 per resident in Imperial County.

## **Four Factors Affecting Cities' Property Tax Revenues**

Statewide, cities' proportion of the property tax varies widely. The statewide average is roughly 20 percent, but in Los Angeles County alone, cities' proportions of the property tax range from less than 10 percent to over 30 percent. There are four primary factors affecting a city's proportion of the property tax: (1) historical property tax revenue, (2) the vehicle license fee swap, (3) redevelopment, and (4) property tax revenue from the county.

**Historical Property Tax Revenue Has the Largest Impact on the Property Taxes Cities Receive Today.** When the [steps for distributing the 1 percent tax](#) first were established in the late 1970s, the amount of property taxes cities received—compared to other local governments serving the same area—became the starting point for determining the amount of property tax cities would receive moving forward. In many cases, the property tax revenue a city received in the mid-1970s reflected the services the city directly provided compared to other local governments serving the same area.

## **Why the Mid-1970s Play a Large Role in Property Taxes Today**

Historically, Local Governments Could Levy Individual Property Tax Rates. Prior to 1978, state law authorized each local government to levy a property tax. Local governments would set their rate based on the amount of revenue necessary to provide the level of services desired by their residents. Each local government's rate was independent of the rate set by other jurisdictions. A property owner's property tax bill reflected the sum of the individual rates set by each local government serving the property.

**Proposition 13 Made Major Changes to the Property Tax.** In 1978, voters passed Proposition 13, which made major changes to California local government finance. Before the passage of Proposition 13, thousands of local governments were levying property taxes on the properties in their jurisdictions. Statewide, the average property tax rate was 2.67 percent. This average rate reflected the sum of individual property tax levies of multiple local governments serving a property. Proposition 13 made three primary changes to property taxes:

- Changed the method for determining a property's value (known as assessed value) for tax levies,
- Limited a property's overall tax rate from all local governments serving the property to no more than 1 percent (with some exceptions),
- Directed the state to determine how to allocate property tax revenue from the 1 percent rate.

**Proposition 13 Shifted Significant Authority to the State.** Before Proposition 13, the property tax had been a local tax levied by local governments for local services... Thus, by directing the state to allocate the property tax, local governments lost control over their property tax rates

(Continued)



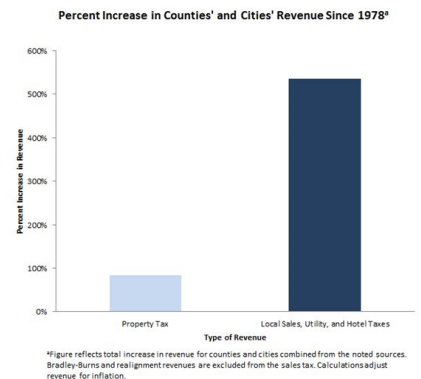


# CITY MANAGER'S MESSAGE (CONTINUED)

(LAO Blog post excerpts, continued)

**Today's Property Tax Allocation Firmly Rooted in Property Tax Decisions of the Mid-1970s.** Today, the total property tax revenue a local government receives is called its AB 8 share after one of the pieces of legislation that implemented Proposition 13. Year to year, property tax revenue typically grows due to increases in assessed values. The revenue growth is distributed to local governments based on the increase in assessed values within their boundaries. Because every property is served by more than one local government, each local government receives a part of the growth in property tax revenue within its boundaries. The amount of growth each local government receives is largely based on the property tax each local government received before Proposition 13. Thus, today's distribution of property tax revenue is founded on the property tax decisions local governments made in the mid-1970s.

**Local Governments Cannot Increase Their Share of the Property Tax to Provide Additional Services.** Proposition 13 directed the state to allocate property tax revenue from the 1 percent rate. As we discussed in our earlier post, this took away local governments' control over their property tax rates. As a result, local governments cannot increase their share of the 1 percent rate in order to provide more services. Moreover, as we discussed in our another post, local governments that offer similar services may receive quite different proportions of the property tax collected within their boundaries. While local governments' property tax revenue typically increases year-to-year due to increases in assessed value, often these increases are not sufficient to cover the cost of offering additional services or cover the cost of growing expenses. As a result, local governments use other forms of revenue—like local sales, utility, and hotel taxes—to raise additional revenue to offer more services. As shown in the figure below, since the passage of Proposition 13, counties' and cities' revenue from these three alternative sources of revenue increased over 500 percent, while property tax revenue increased roughly 80 percent.



The above were excerpted portions of the LAO blog on property tax written by Carolyn Chu. I encourage you to read the full blog (it's a quick and simple read) with links to other information.

The bottom line, and how it is relevant to the City of Fullerton, is that it helps explain how many of our financial issues today were set in place by decisions in the 1970's and before. When a city could set its expenditure budget, and then set its property tax rate to raise revenue, many cities, including Fullerton could make decisions that, while not impactful then (such as providing more housing than commercial properties), negatively affect us now. Additionally, more conservative cities, such as Fullerton, which were cognizant of expending too much, were forever penalized by having a lower rate of property tax based on expenditure patterns set in the 1970's. With property taxes capped, cities then looked at the sales tax as an alternative primary source of revenue. This emphasis on sales tax led to cities competing for auto malls and larger malls, for big box retailers such as Costco, Home Depot, and Wal-Marts, and led to some cities rebating sales tax dollars to attract significant new sales tax generators because the thought was that even 50% of some sales tax was better than 100% of none! What this caused was for high sales tax generators to shop around to a city that would rebate the most amount of money to the company, depriving the city from which they re-located the previous amount of sales tax and, the residents of the new city from fully benefiting by the increase. For those cities such as Fullerton which did not have a larger commercial base, we were always at a disadvantage to benefit from higher sales tax generation.





## CITY COUNCIL MEETING PREVIEW

***The August 4, 2020, City Council Meeting (regular session) was cancelled by City Council action at its July 21, 2020 meeting. The City Council held a WebEx meeting for Closed Session starting at 5:00 pm and the meeting adjourned at 6:20 pm. The only agenda item was for Labor Negotiations. No Public Comments for the Closed Session were submitted electronically or in person. There was no reportable action by the City Council.***

### **Agenda Forecast for Tuesday, August 18, 2020 is:**

*(Please note that the Agenda Forecast is a best attempt to list those items that are planned to be included on a future agenda. Due to differing circumstances, items may be included on the forecast but moved to a subsequent meeting. Items may also be added at the last moment, and therefore not on the forecast. Items not listed in any form of priority or placement on agenda.)*

#### **City Council Meeting Minutes**

#### **Monthly Legislative Update (item continued from July 21, 2020)**

#### **Brea Dam Verizon Cell Tower Extension**

#### **July 2020 Check Register**

#### **Personnel Management System Changes**

#### **Reaffirmation of Declaration of Local Emergency Due to COVID-19 Pandemic**

#### **Emergency Water Main Repair on North Acacia Avenue**

#### **Curb/Gutter and Sidewalk Reconstruction Fiscal Year 2019-20**

#### **Designation of Areas Eligible for Block Improvement Grant Program Funding**

#### **Catch Basin Connector Pipe Screen Installation Project**

#### **Approval of 2020-21 Office of Traffic Safety Agreements**

#### **Reschedule November 3, 2020 City Council Meeting to Monday, November 2, 2020**

#### **Fullerton Municipal Code Amendment to Chapter 8.75 Regulating Sidewalk Vendors**

#### **CalPERS Employer Paid Member Contributions**







*(continued)*

***Victoria Drive Infrastructure Improvement Project—Phase I***

***Runway Shoulder Enhancement Project—Design Services Award***

***Surplus Property Declaration for 799 Rolling Hills Drive and 1151 West Bastanchury Road (Bastanchury Tree Farm)***

***Selection of Consultant to Provide Professional Services for Development of a Housing Incentive Overlay Zone and Applicable CEQA Analysis and Approval of Professional Services Agreement***

***Selection of Consultant to Provide Professional Services to Update the Housing Element of the General Plan (2021-2029) and Approval of Professional Services Agreement***

***Commonwealth Avenue Infrastructure Improvements***

***Modification of Statement of Financial Policies***

***Orange County Transportation Authority Measure M2 Environmental Cleanup Tier 1 Grant Program Fiscal Year 2020-2021***

***Selection of Consultants to Provide On-Call EQA Services and Authorization to Enter Into Professional Services Agreements***



# OC ANIMAL CARE CENTER SERVICES

On Saturday, August 8, OC Animal Care is hosting their monthly **Family Fur-st Drive-Thru Pet Food Pantry** from 8-10 a.m. The goal of this event is to help keep pets in their homes by supporting their families who may be suffering hardships, such as job loss, due to these challenging times. This pantry will be held on the second Saturday of every month, and **all pet owners in need of food are welcome!**



We are excited to announce that OC Animal Care is participating in **Clear the Shelters 2020 'adopt or donate'** campaign! Starting Saturday and through the entire month of August, we will be featuring adoptable pets and asking the community to support our efforts by donating.

## How can you Adopt?

- OC Animal Care is currently closed to walk-in visitors. All adoptions are by appointment only.
- To adopt please call the facility at 714-935-6848 with the animal id number (ex: A1234567) of who you are interested in. Call center hours are 7 days a week from 8 a.m. to 5 p.m. excluding government holidays.

You can find a list adoptable pets on OC Animal Care's website at: <http://petadoption.ocpetinfo.com/Adopt/>

## How can you Donate?

Donate to OC Animal Care's Family Fur-st Drive-Thru Pet Food Pantry and help keep families together. Donations of pet food can be made through the shelter's Amazon Wishlist at: [https://www.amazon.com/hz/wishlist/ls/1RLVXG7Y9HMNV/ref=nav\\_wishlist\\_lists\\_1?encoding=UTF8&type=wishlist](https://www.amazon.com/hz/wishlist/ls/1RLVXG7Y9HMNV/ref=nav_wishlist_lists_1?encoding=UTF8&type=wishlist)

You can also donate to OC Animal Care at [ClearTheSheltersFund.org](http://ClearTheSheltersFund.org). The Great Good Foundation will be matching donations dollar to dollar during the first week of the campaign up to \$100,000 to shelters across the country.

## Clear the Shelters is August 1-31st Adopt or Donate!

OC Animal Care is currently closed to walk-in visitors. Adoptions are by appointment only.

Please call 714-935-6848 to make an appointment. For a list of available animals, visit [www.ocpetinfo.com](http://www.ocpetinfo.com)

Donate to our Family Fur-st Pet Food Pantry to help keep families together through our Amazon Wishlist.

You can also donate to OC Animal Care at [ClearTheSheltersFund.org](http://ClearTheSheltersFund.org)



OC Animal Care



CLEAR THE SHELTERS  
4T52

OC Animal Care | 1630 Victory Road | Tustin | CA | 92782  
[www.ocpetinfo.com](http://www.ocpetinfo.com) | 714-935-6848



# Public Works

## Water Division Updates

### Meter Shop

Meter Shop staff perform meter reading duties and respond to service calls during normal hours of operation and callouts after hours. In addition, they also turn water services on or off based on residents' needs, post water service accounts, replace water meters, water meter boxes/lids and perform repairs/tests on water meters.

Meter Shop Summary (7/25 – 7/31/2020)	
Callouts	2
Service Calls	27
Meter Reads	1
On/Off	103
Postings	0
Lid/Box Replacements	6
Meter Repairs/Tests	7
Meter Replacements	27

### Water Production

Staff perform a variety of field lab sampling as required by the state of California. This includes water samples from our wells, reservoirs and water distribution system. Control valves and plug valves regulate water between different pressure zones or elevations within the water system and require preventative maintenance (PM). Well production is a total of gallons produced from City water wells, and MWD production gallons reflect water purchased from Metropolitan Water District.

Water Production Summary (7/25 – 7/31/2020)	
Volatile Organic Compounds/	139
General Physical Samples	
Bacteriological Samples	52
Control Valve PM	1
Plug Valve PM	0
Well Production Gallons	141,079,000
MWD Production Gallons	45,276,440

### Water Quality Specialist

The Water Quality Specialist monitors routine and main break bacteriological results and takes action if a positive sample is detected. Per California regulation, water services that present a hazard to the water supply are required to have a backflow prevention device to prevent polluted or contaminated water from entering the potable water system. These devices must be tested yearly to ensure they are in working order. The Water Quality Specialist is also responsible for water conservation complaints and assists in responding to billing disputes.

Water Quality Specialist Summary (7/25 – 7/31/2020)	
Total Bacteriological Samples sent for testing	53
Positive Bacteriological Samples	0
Backflow testing results processed	80
Follow up water conservation contacts	1
Water bill disputes	1





# Public Works

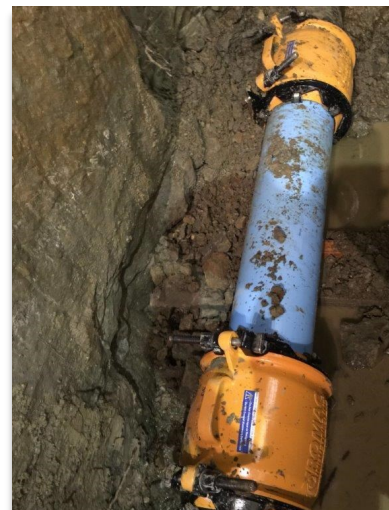
## Water Division Updates *(cont.)* & Water Repair

### Water Distribution

This Division is responsible for the maintenance of the water transmission and distribution system that delivers water to City residents, businesses, and industries. The water transmission and distribution system consists of 430 miles of water pipeline, more than 31,500 metered services, 4,000 fire hydrants, and 12,000 valves. On an annual average, we respond to 4,600 underground service alert tickets.

Water Distribution Summary (7/25 – 7/31/2020)	
Water Main Breaks	1
Valve Replacements	2
Water Service Replacements	0
Water Service Repairs	1
Angle Stop Replacements	1
Meter Replacements	1
Fire Hydrant Replacements	0
Fire Hydrant Repairs	2
Fire Hydrant PM's	40
Fire Hydrant Flushings	42
Mainline Valve PM's	43
Respond to U.S.A. Requests	130
Water Dig Outs	0
Shutdowns/Reopens	3

On August 1, a Water Construction Crew responded to 3000 Associated Road to repair a water main break. To make repairs, the crew installed three feet of six-inch-diameter C909 pipe, along with two Romac Alpha Couplings. The asphalt repairs will begin as soon as possible.

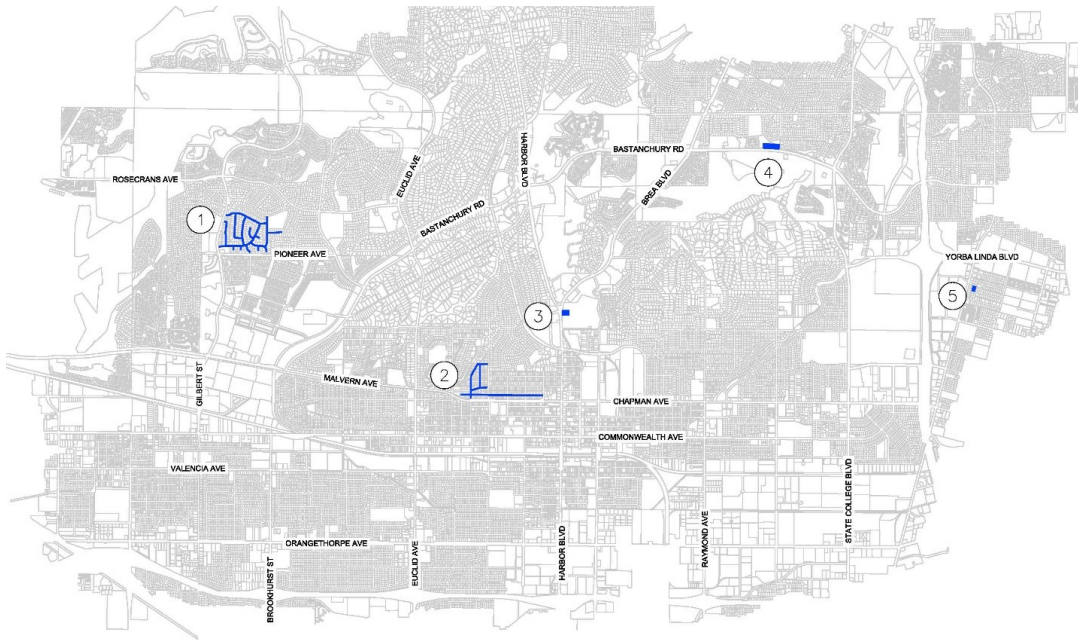




# Public Works

## Engineering Division Updates

### Citywide CIP Projects in Construction



### Project Legend

- Project 1 – Loma Alta Infrastructure Project – Water, sewer and street improvements
- Project 2 – Jacaranda-Drake Infrastructure Project – Water, sewer and street improvements
- Project 3 – Hillcrest Park Duck Pond – Park area renovation
- Project 4 – Rolling Hills Park – Park area renovation
- Project 5 – Pearl Park – Creation of park on vacant land

### Hillcrest Duck Pond Progress Photos



# Parks & Recreation

## Senior Services

### Senior Services

The Parks and Recreation Department is **STILL CONNECTING & SERVING** our senior community.

Senior services during COVID-19 include: Meals on Wheels OC food distribution and home delivery, grocery box distribution, Senior Buddies Program in partnership with Fullerton Free, emergency feeding assistance, and regular wellness reassurance calls to our community members. Through our partnerships, we have been able to provide 10,258 seniors with food and other essential services.

Due to funding changes with our partner Second Harvest Food Bank, the **senior grocery distribution program has been cancelled at the Fullerton Community Center on Thursday, August 6<sup>th</sup>**. In addition, distribution time will be shifting to 3pm-4:30pm beginning Thursday, August 13<sup>th</sup>. Seniors in immediate need of food assistance are encouraged to call 714-738-6575 for referral services.

**Art at Home: A Course in Creativity** is the Fullerton Community Center's newest way to bring you educational art opportunities in the comfort of your own home. Courses are designed with older adults in mind, but are multi-generational and appropriate for all ages. Instructional guides and video tutorials are provided by the City's Education Coordinator. All courses are created with a custom theme and include all necessary materials/ supplies conveniently packaged. Art at Home is provided at no cost for older adults ages 60+.

The Art at Home- Picasso Clay Owls course will be available for drive-through pick-up at the Fullerton Community Center on Tuesday, August 11th from 2pm to 4pm. You can make your own clay owl—or your own favorite bird—using Picasso's trademark simplicity of style that characterized his mature work. Pablo Picasso

(1881—1973) was such a huge influence on 20th century art that his name has become synonymous with artistic genius. He experimented with many different styles of art throughout his long and powerfully creative life. As an older adult, Picasso worked a lot in clay. He enjoyed making small pieces of household art that were more affordable to regular people than were his famous paintings. Owls provided inspiration for many of Picasso's ceramics.

Seniors and their loved ones are encouraged to call 714-738-6575 to be advised about the current programs and services that are being offered. Referrals to County resources and other services can also be provided. Please see the Fullerton Community Center website ([www.fullertoncommunitycenter.com](http://www.fullertoncommunitycenter.com)) for a full list of programs and services, and a comprehensive list of referrals to outside agencies.



**We are happy to be STILL CONNECTING & SERVING!**





# Parks & Recreation

## Feed Fullerton, Groundbreaking Ceremonies & Museum

### FEED FULLERTON

Spaces are still available for the Feed Fullerton program. This City-run program connects low-income households with nutritious meals provided by 21 participating Fullerton restaurants. Patron eligibility is based on Fullerton residency and income levels. Participants are accepted for two month enrollment periods where they receive 12 meal vouchers to be redeemed for specialty Feed Fullerton menu items at participating restaurants. Additional information, applications, and participating restaurants can be found at [www.fullertoncommunitycenter.com/feedfullerton/](http://www.fullertoncommunitycenter.com/feedfullerton/).



### GROUNDBREAKING CEREMONIES

#### ◇ **Korean War Memorial at Hillcrest Park Groundbreaking Ceremony**

Hillcrest Park, north of the Great Lawn (adjacent to the Hillcrest Duck Pond construction project)  
Friday August 14  
10:00am

#### ◇ **Pearl Park Groundbreaking Ceremony** (Pearl Lot—3001 Pearl Drive)

Tuesday August 18  
2:00pm (*start time is tentative*)

### FULLERTON MUSEUM

#### ◇ **Kids Art TO GO**

Back by popular demand and thanks to the Fullerton Fire Association and Councilmember Zahra our Weekly FMC Kids Art TO GO will be resuming weekly starting Thursday, August 13<sup>th</sup> during the Downtown Fullerton Farmers Market. The Museum, even though still temporarily closed to the public, will be able to provide 100 weekly art kits. The art kits are recommended for ages 6-12 and these pick-ups are available on the Museum patio on Thursdays from 4:00 pm – 6:00 pm. The first kit allows young artists to learn about color theory as they trace, cut and color vibrant circles based on the work of 20<sup>th</sup> century artist Wassily Kandinsky.



#### ◇ **New Exhibit: The FMC and ME**

Over these nearly fifty years, the Fullerton Museum Center has inspired us, entertained us, challenged us, and been a catalyst for growth and debate. Now, almost 5 decades later, the Fullerton Museum Center is seeking the artistic talents of the community it serves. "The FMC and ME" exhibit, scheduled for opening on September 3rd, will be a celebration of art in Fullerton for and by museum patrons and friends. Art panels will be available to the community at no cost to use as the basis of their artwork recognizing their memories and feelings of what the FMC has meant to them. Once the artworks are returned to the Museum, they will be displayed in the main gallery in a groundbreaking exhibition that will pay homage to the history of the institution and its role in Fullerton. Art panels may be picked up and returned to the Fullerton Museum Center on Thursday evenings at the Downtown Fullerton Farmers Market from 4:00-6:00pm starting July 30<sup>th</sup> until August 20<sup>th</sup>. Artworks may be submitted on different surfaces and in different mediums. All artworks will be for sale with the proceeds going to the Fullerton Museum Center Association to secure the next 50 years of arts and culture in Fullerton.





# Parks & Recreation

## Youth Sports & Services

### **Youth Sports: State Releases Guidance to Allow Youth Sports Practices**

The California Department of Public Health released new COVID-19 guidance for youth sports on August 3. The new guidelines allow sports teams to do physical conditioning and sports drills using social distancing practices and in small numbers. No games are allowed at this time. Since these guidelines are very close to the ones sports teams were following prior to the state-wide shutdown on July 9, teams could be back practicing on City fields as soon as August 10. For the exact guidance, please click [here](#).

### **Youth Services**

This week marks the final week of The Parks and Recreation Department's Camp Hillcrest youth summer day camp program. Operating out of Hillcrest Park, Camp Hillcrest offered children between the ages of 5-12 exciting opportunities to participate in arts and crafts, athletic play, socialization, dance activities, on-site entertainment, and so much more! The Department has also offered the Summer Playgrounds Program out of the Maple Neighborhood Center this summer, including similar recreational activities, themed movie and water days, and a free daily nutritious meal through a partnership with Second Harvest Food Bank of OC. The Department took proactive measures to ensure that all campers have a fun and safe summer this year. Modifications were made to check-in and check-out protocol, sanitation procedures, group activities, and meal service. Masks and an entrance screening prior to participation were required of all campers, staff, and volunteers. Additionally, normally scheduled off-site excursions were replaced with safe and exciting on-site entertainment and other activities. Participation in each program was limited to no more than 40 participants per week. Camp Hillcrest is currently running until Friday, August 7. Please contact the Parks and Recreation Department at 714-738-3161 with any questions or for more information.

The Parks and Recreation Department is also excited to announce the return of its After School Education and Safety (ASES) Program beginning next week. Offered through a partnership with the Fullerton School District, this year of ASES programming will begin virtually. Parks and Recreation Staff members will be offering students of Maple and Orangethorpe Elementary schools exciting opportunities to engage in virtual educational enhancement, including homework assistance, socialization, STEM activities, interaction, distanced physical education, and so much more. For registration information, please contact the Parks and Recreation Department at 714-738-3161 for more information. Please note that participation in the City's ASES programs is limited to Maple and Orangethorpe Elementary School students in grades 1-6.



# Library

Got Books? Online Holds are Now Available!



You can now place holds directly in our [catalog](#)!

Here's how it works: When you place items on hold, library employees will pull the available items from the shelves and process them for pickup. Once the hold becomes available, you will receive an automated notification by email or phone that the items are ready.

Once you have been notified that your items are ready, call the library Monday through Friday from 11:00 a.m. to 4:00 p.m. at (714) 738-6333 to make an appointment to pick them up. You will have 14 days from the time of notice to pick up your materials. (If you can't call, send us an email at [info@fullertonlibrary.org](mailto:info@fullertonlibrary.org).)

Due to high demand, the library requires a minimum of two to three full business days to process requests. (During this time there may also be a slight delay in our ability to reach out to you by email or phone.) We ask you to be patient as we work hard to fulfill your requests while taking extra precautions, including quarantining returned books for 96 hours, to ensure your safety.

Returns are not accepted during curbside pickup. To return your items, please use the outdoor book drop between Monday at 9:00 a.m. and Friday at 4:00 p.m.

Questions about our curbside service? Click [here](#).

Thank you and happy reading!





# Library

## Dig Deeper—Read, Investigate, Discover!

There's still time to sign up for Summer Reading. Children through 8th grade can earn prizes by keeping track of the time they spend reading independently or sharing books with their favorite grownups. And why should kids have all the fun? Teens and adults can also join. Register online at [fullertonlibrary.readsquared.com](http://fullertonlibrary.readsquared.com) or download the Read Squared App!

Summer Reading Prizes are available for curbside pickup. Call the library at (714) 738-6338 to make your appointment today!



**DIG DEEPER Fun Fact:** As of July 22, Summer Reading Club kids have logged over 230,000 minutes of reading!

## The California State Library Wants To Hear Your Story!



Each of us has been impacted in different ways by the COVID-19 pandemic. The California State Library is working with local libraries to collect COVID-19 stories from across the state.

We invite you to share your experience—in an essay, poem, letter, photograph, artwork or video—so that we can preserve these memories for future Californians. [#CASummerReading](https://www.surveymonkey.com/r/SD2DXNR)

Learn more here: <https://www.surveymonkey.com/r/SD2DXNR>



# Library

## FPL's New Children's Programs Are Here!

No matter what the circumstances, FPL's Children's Library is here to help bring the joy of books to our favorite library patrons: the kids! Enjoy a variety of storytime programs brought directly to you by our dedicated Children's Services librarians as they read books, sing songs, lead fingerplays, and even break out the puppets!



Find out more about Read with the Dogs, Little Spoonfuls, Story Break, Puppet Posts and other virtual programs at <https://www.fullertonlibrary.org/kidszone/programs>.

## Can You Solve The Latest Virtual Lockbox Challenge?

Our Children's Library is debuting another online activity for kids: the Virtual Lockbox Challenge! A virtual lockbox is an online activity where you are introduced to amazing stories as you work your way through a series of clues, puzzles and challenges. You don't need to worry about clicking a wrong answer. Eventually you end up right back to the question and you can try again. You never know what's behind one of those answers, so go ahead and explore.

Have you ever had a pet that you really loved? Accept this lockbox challenge and find out what happened when twelve-year-old Peter was forced to give up his beloved pet. You will be introduced to an amazing story as you proceed through a series of clues, puzzles and challenges. [#SaraPennypacker](#)

To begin your adventure, click here: <https://forms.gle/r4MiFR15gxVBYreZ>.

Find more lockbox challenges and other virtual programs at <https://www.fullertonlibrary.org/kidszone/programs>.

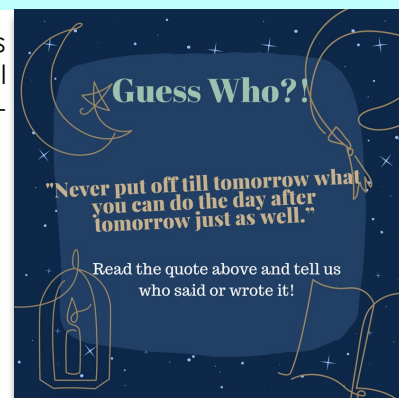




# Library

## Visit FPL On Social Media and Guess That Book or Quote!

Did you know that Fullerton Public Library offers fun daily activities, like Guess that Book (or Movie) and Guess that Quote? To participate, just visit FPL's social media pages. Will you be the first to solve our daily riddles and earn the admiration of your fellow library lovers? [#fullertonlibrary](https://www.facebook.com/fullertonlibrary)



## Remembering 1904, When Fullerton's Third Ever Church was Erected



When Charles Chapman, the city's first mayor, moved to Fullerton in 1898, there was no First Christian Church, and he had to attend services in Anaheim. In 1904, he purchased a lot at the northeast corner of Harbor and Wilshire and erected Fullerton's third church building. The congregation used the church until 1911, when it was moved to 115 E. Brookdale, where it now stands.

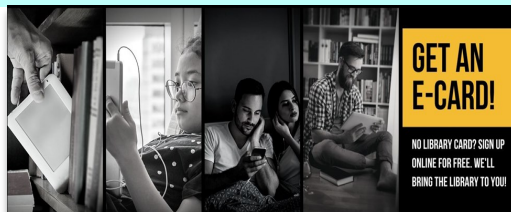
Visit FPL on social media to find out more about Fullerton's history! [#fullertonlibrary](https://www.facebook.com/fullertonlibrary)

## FPL Is Here To Help!

Questions about your library account? Circulation questions can be answered Monday through Friday between 11:00 AM and 4:00 PM by phone at (714) 738-6333 or email at [circulation@fullertonlibrary.org](mailto:circulation@fullertonlibrary.org).

Upcoming posts about future programs can be found on the library's Facebook, Instagram, YouTube, and MeetUp accounts!

Don't have a library card? Sign up for an E-Card and access all of our online resources including e-books, e-audiobooks, e-magazines, academic and research databases, and more. Make sure to remember your PIN and write down the temporary card number you receive. You'll need both of those to access our resources.





# Library

## Boardgame Empire Feels The Need For Speed!

FPL's Boardgame Empire Online program is open to everyone, with friendly and welcoming library staff members hosting game days every Friday afternoon from 1:00 p.m. to 3:00 p.m. To participate, you will need to create a free account at [boardgamearena.com](https://boardgamearena.com) and join the "Boardgame Empire" group. We hope to see you around the table soon!



This month's game of choice is *Tobago*, an adventure game in which players race to uncover the location of buried treasure on a cursed island! Also there are ATVs and animated statues that dispense magical amulets. Designed by Bruce Allen, *Tobago* was published in 2009 by Zoch Verlag. At the end of the game, the player who best uses their deductive reasoning (and a bit of strategy) to recover the most sweet, sweet treasure wins!



## Beware The Thing In The Library!



Drop us a line at [info@fullertonlibrary.org](mailto:info@fullertonlibrary.org) to join our new scary book club for adults and teens, The Thing in the Library. (Just mention "The Thing in the Library" and we'll add you to our list of invitees on Zoom.) Then, join us on the first Wednesday of every month at 4:30 p.m. to discuss a different horrifying tale! For August, we're getting seriously graphic (as in "graphic novel") with *Monstress* by Marjorie Liu and Sana Takeda and published by Image Comics, an epic fantasy series set in a matriarchal society based on early 20th century Asia. Even though it is fantasy (with great world-building), this series is brimming with outré horror and epic monsters, making it a perfect fit for our book club!



## Stay Up To Date With The FPL Connect Newsletter!

Subscribe to FPL Connect, the Fullerton Public Library's weekly newsletter, featuring timely stories that encourage readers to explore library programs, services, and events. Stay up to date on FPL's virtual programs for children, like Read with the Dogs: Homestyle Edition, Little Spoonfuls, Story Break, and Puppet Posts. For older library patrons, explore exciting online programs like Boardgame Empire: Online Edition, The Thing in the Library (our new scary book club), and Anime Afternoons (just for teens). On social media, discover new titles to download or pick up curbside with our Book Blast video book review series and follow the Local History Room for fascinating weekly posts. FPL Connect delivers it all to your inbox. [Sign up](#) today!



# City Directory

ADMIN. SERVICES	714-738-6521	FIRE	714-738-6500
AIRPORT	714-738-6323	HOUSING	714-738-6544
BUSINESS REGISTRATION	714-738-6531	HUMAN RESOURCES	714-738-6361
CITY ATTORNEY	714-446-1400	LIBRARY	714-738-6388
CITY CLERK	714-738-6350	MUSEUM	714-738-6545
CITY COUNCIL	714-738-6311	PARKS AND RECREATION	714-738-6582
CITY MANAGER	714-738-6310	POLICE	714-738-6716
CODE ENFORCEMENT	714-738-6553	PUBLIC WORKS—ENG.	714-738-6845
COMMUNITY CENTER	714-738-6575	PUBLIC WORKS—MT.SRV.	714-738-6897
COMMUNITY & ECONOMIC DEVEL.	714-738-6541		

## DID YOU KNOW...

### Early Fullerton History

The Dr. George Clark House and Office, now known as the Heritage House, was moved to the Fullerton Arboretum from its original location at 114 N. Lemon in 1972 and carefully restored. Built in the Victorian Eastlake style in 1894 for \$1,300.00, the Clark House is one of the oldest surviving homes constructed within the city's original townsite.



[WWW.CITYOFFULLERTON.COM](http://WWW.CITYOFFULLERTON.COM)



/CITYOFFULLERTON



@FULLERTONCA



@CITYOFFULLERTONCA

